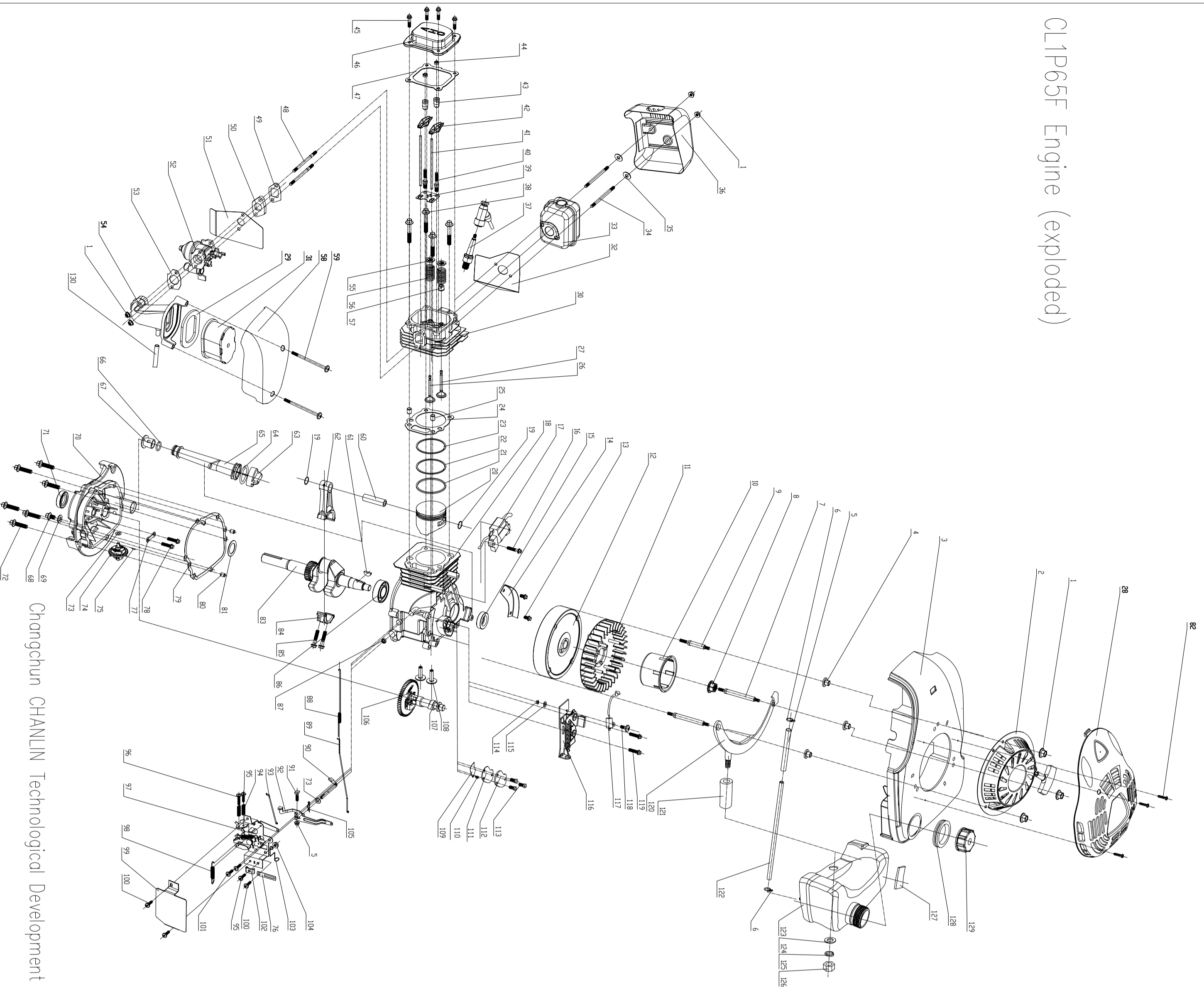


# CL1P65F Engine (exploded)



CL1P65F gasoline engine detailed list of specifications

No.	Parts code No.	NAME	Quantity	No.	Parts code No.	NAME	Quantity	No.	Parts code No.	NAME	Quantity
1	GB/T5177.1	Nut M6	8	55		Valve spring cap	2	109		siphon	1
2		start system	1	56		Valve spring	2	110		Nut bolt M3X5	1
3		wind scooper parts	1	57		Parts of the pipe sealed by oil	2	111		Cover plate cushion of the siphon	1
4		Bushing 1	2	58		Air-cleaner cover	2	112		Cover plate of the siphon	1
5		Shield tube	1	59		Nut bolt MSX40	2	113		Bolt MS4I2	3
6		Cord hoop	2	60		Sucker	1	114		Nut M5	1
7		Bolt	2	61		Key 4.0x6.5x16	1	115		Gasket 5	1
8		Flywheel nut	1	62		Perch liner	1	116		The brake equips assembly	1
9		Ignition plate position parts of the starting crank jaw covering grade	1	63		Machine oil ruler	1	117		Turnroff switch	1
10		Bolt	1	64		Check cap 0 model loop	1	118		Nut bolt MSX15.1	2
11		Boat fan	1	65		Dil road assembly	1	119		Bolt MS420	2
12		Flywheel parts	1	66		00 model hoop 20x255	1	120		Ports of bracket of the oil case	1
13		Nut bolt M6X20	2	67		gilling tube framework	1	121		Gum set	1
14		Chimney aspirator	1	68		oil draining plug screw	1	122		Intake oil tube	1
15		Parts of the bracket sealed by oil	1	69		Sealed cushion	1	123		Dil case	1
16		Bolt M6x25	1	70		Down crank case parts	1	124		Gasket 8	1
17		Ignition loop parts	1	71		Parts of the bracket sealed by oil	1	125		Gasket 8	1
18		Up crank case parts	1	72		Bolt M8x50	6	126		Nut M8	1
19		Sucker spring	2	73		Flap gasket 6	2	127		Reduce vibration cushion	1
20		Ram	1	74		Adjust speed parts	1	128		Reduce vibration cushion of the oil case	1
21		Group of oil ring	1	75		cylindrical pin 20x66	1	129		Rubber soft tube	1
22		The second ring of the piston	1	76		Exhaust-oil tube clip	1	130			
23		The fristing of the piston	1	77		Adjust speed plate	1				
24		Cylinder cushion	1	78		Bolt M6x12	2				
25		Cylinder cap dowel	2	79		Crank case cushion	1				
26		Dut valve	1	80		Crank case dowel	2				
27		In valve	1	81		Crank timing gear cushion screw nail ST42x16-C-H	1				
28		Starting pull-plate casing	1	82		Crank	1				
29		Gasket	1	83		Cover of the perch	1				
30		Cover of the cylinder	1	84		Perch bolt	2				
31		Filter core	2	85		Bearing 205	1				
32		Battle wind plate	1	86		Sealed by oil parts	1				
33		Muffler parts	1	87		Idle speed spring	1				
34		Ball screw bolt of the muffler	2	88		Gasoline throttle drag bolt	1				
35		Graphite cushion 2	1	89		Angular section drag bar	1				
36		Dut sump parts	90			Fastening bolt	1				
37		Spark plug parts	3	91		Gasoline throttle oscilling arm	1				
38		Ball of the cover of cylinder	1	92		Check valve drag bar	1				
39		Pushing bar retainer	4	93		Adjust compress spring	2				
40		Rocker arm double screw bolt	1	94		Nut bolt MS420	2				
41		Crossbar	2	95		Nut bolt MS435	1				
42		Radius arm	2	96		Parts of the adjust speed plate	1				
43		Nut of the radius arm	2	97		Adjust speed spring	1				
44		Fastening nut	1	98		Adjust speed buffer plate	1				
45		Bolt M6x16	4	99		Nut bolt MS410	3				
46		Cover of the cylinder	1	100		Nut bolt M6x122	1				
47		Filler of the cover of cylinder	2	101		Compress plate	1				
48		Ball screw bolt of the muffler	1	102		Prop up a pole of oil tube	1				
49		Correct plate filler of the carburetor	1	103		Nut M5	1				
50		Correct plate of the carburetor	1	104		Steel wire knafrie turn	1				
51		Filter of the carburetor	1	105		Compress spring	1				
52		Caruretor parts	1	106		Shaft of the male rod	1				
53		Filter of the air cleaner	1	107		Crossbar	2				
54		Air cleaner support	1	108							

Changchun CHANLIN Technological Development Co., Ltd