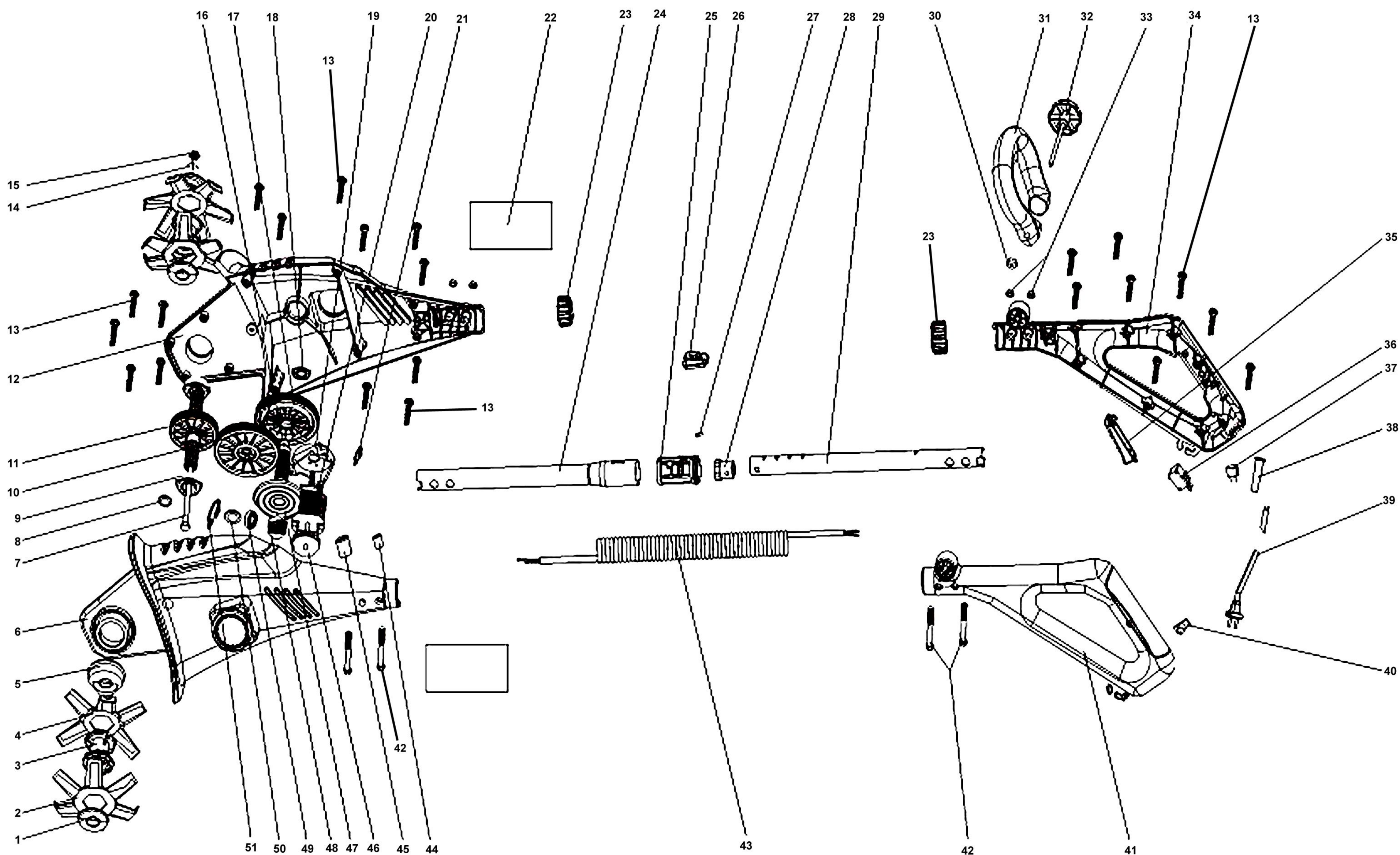




Electroazada MK 1300 E





MK1300E

Num	Referencia	Nombre	Cant	Num	Referencia	Nombre	Cant
1	78MK1300E-1	Arandela placa fresa	2	27	78MK1300E-27	Rodillo telescópico	1
2	78MK1300E-2	fresa exterior	2	28	78MK1300E-28	Casquillo telescópico	1
3	78MK1300E-3	Soporte fresas	2	29	78MK1300E-29	Tubo caña superior	1
4	78MK1300E-4	Fresa interior	2	30	78MK1300E-30	Tuerca pomo asidero	1
5	78MK1300E-5	Guardapolvo fresa	2	31	78MK1300E-31	Asidero	1
6	78MK1300E-6	Carcasa izq.	1	32	78MK1300E-32	Pomo asidero	1
7	78MK1300E-7	Eje pasador fresas	1	33	78MK1300E-33	Tuerca	4
8	78MK1300E-8	Anillo	1	34	78MK1300E-34	Semi manillar dcha.	1
9	78MK1300E-9	Cojinete eje	2	35	78MK1300E-35	Gatillo interruptor	1
10	78MK1300E-10	Corona intermedia	1	36	78MK1300E-36	Interruptor	1
11	78MK1300E-11	Eje + corona	1	37	78MK1300E-37	Capacitador	1
12	78MK1300E-12	Carcasa dcha.	1	38	78MK1300E-38	Manguito cable	1
13	78MK1300E-13	Tornillo	22	39	78MK1300E-39	Cable + clavija	1
14	78MK1300E-14	Arandela	1	40	78MK1300E-40	Pulsador stop	1
15	78MK1300E-15	Tuerca eje fresas	1	41	78MK1300E-41	Semi manillar izq.	1
16	78MK1300E-16	Eje engranajes	1	42	78MK1300E-42	Tornillo	4
17	78MK1300E-17	Corona primaria	1	43	78MK1300E-43	Cable interno	1
18	78MK1300E-18	Anillo corona	1	44	78MK1300E-44	Casquillo	1
19	78MK1300E-19	Soporte motor	1	45	78MK1300E-45	Casquillo	1
20	78MK1300E-20	Motor	1	46	78MK1300E-46	Ventilador motor	1
21	78MK1300E-21	Clip	1	47	78MK1300E-47	Placa piñones	1
22	No disponible	Etiqueta	1	48	78MK1300E-48	Muelle presión	1
23	78MK1300E-23	Tuerca conectora	2	49	78MK1300E-49	Cojinete	1
24	78MK1300E-24	Tubo caña inferior	1	50	78MK1300E-50	Anillo	1
25	78MK1300E-25	Conector tubos	1	51	78MK1300E-51	Frenillo	1
26	78MK1300E-26	Pulsador telescópico	1				