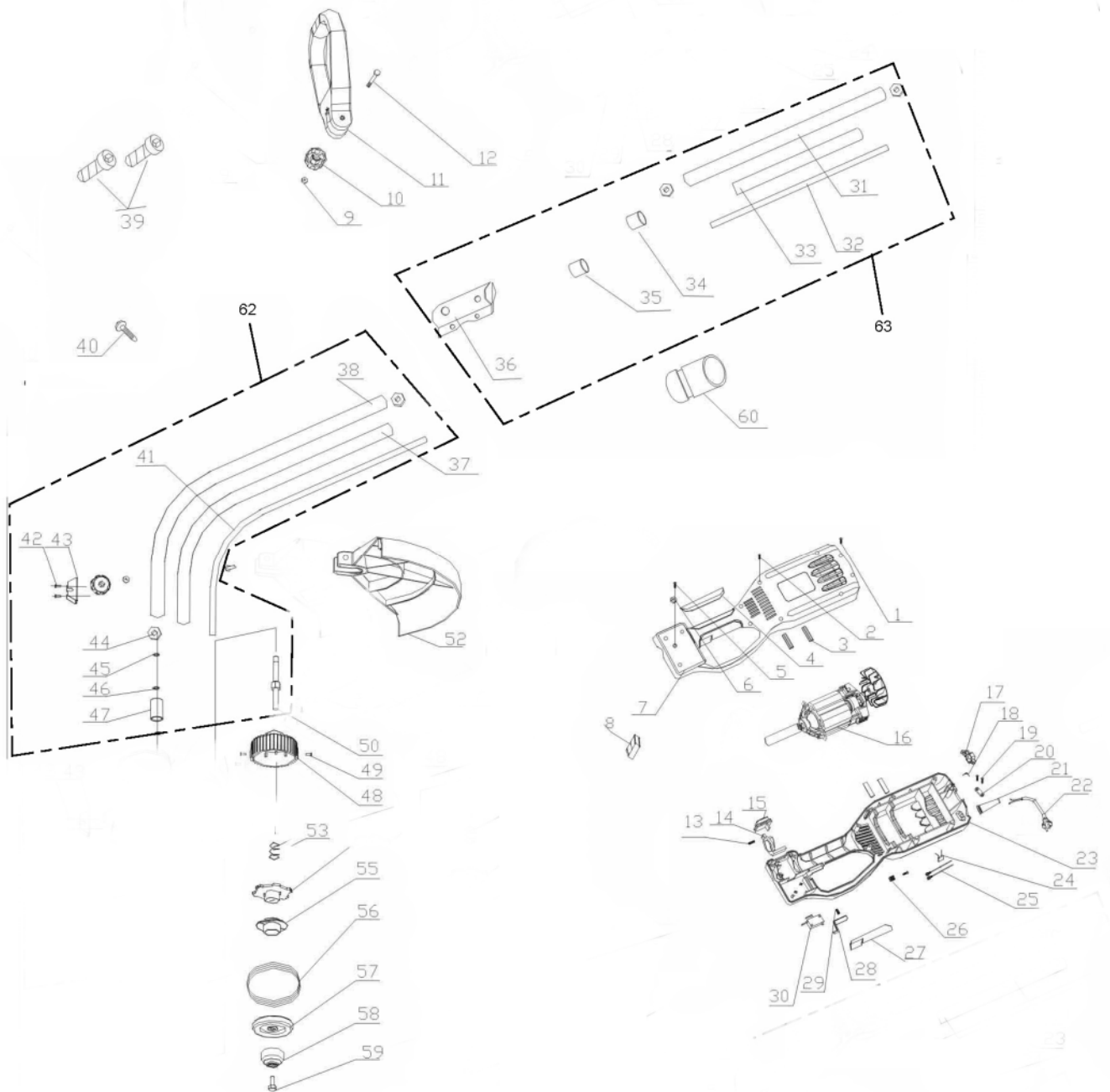




GT1000



No	Part No	Article	QTY	Mat.Mod.	handling
35	8204-691202	steel loop	1		15.5
34	8204-691201	steel loop	1		10.5
33	8061-691203	fixed tube(straight)	1	PA1010	
32	8081-691201	soft shaft	1		
31	8061-691201	connection tube	1		
30	8042-463102	Micro switch	1		
29	8342-691102	pressure spring	1		
28	8044-691101	trigger	1	PA6+30GF	
27	8005-691102	rear handle cover	1	ABS	
26	8411-522201	terminal row	1	PVC	
25	8413-691101	lead wire	2		18AWG
24	8416-691101	capacitor	1		0.33uF
23	8006-691101	left housing	1	PP+GF30	
22	8422-691105	power cord	1	PVC	
21	8332-625001	cable sheath	1	PVC	
20	8184-282101	pressure board	1	PA6+30GF	
19	8SJAB40-14B	screw	4		ST4
18	8342-691104	torque spring	1	65Mn	
17	8343-691101	cable hook	1	PA6+30GF	
16	8401-691104	motor ass'y	1		230V 1000W
15	8312-691101	push button	1	PA6+30GF	
14	8331-691103	fixed sleeve	1	ABS	
13	8342-691103	pressure spring	1		
12	8SFD06-60B	hex screw	2		M6
11	8003-522202	auxiliary handle	1	PP6+30GF	
10	8313-522201	knob	2	PA6+30GF	
9	8NA-06B-1005	hex nut	2		M6
8	8020-522201	auxiliary handle cover	1	PA6+30GF	
7	8006-691102	right housing	1	PP+30GF	
6	8WF-04B-0801	washer	1	Ø4	
5	8SJAD04-12B	screw	1		M4
4	8005-691101	rear handle cover	1	ABS	
3	8341-691101	reducing micron gasket	4		
2	8SJAB40-18B	screw	10		ST4
1	8SJAB30-15B	screw	2		ST3
63	788061-690003		1		
62	788061-690002		1		
61	788401-690001		1		
60	8065-691201	connector	1		
59	8SACD06-25B	hex screw	1		M6*25 8.8
58	8313-691101	knob	1	PA6+30GF	
57	8331-691101	cutting head stem	1	PA6+30GF	
56	8370-691101	Nylon line	1	PA6	Ø1.6*5M
55	8141-691103	spool	1	PP	
54	8141-691102	clutch base	1	ABS	
53	8342-691101	pressure spring	1		
52	8185-691101	guard cover	1	PP+GF30	
51	8231-691101	blade	1	65Mn	
50	8081-691102	shaft	1	40Cr	
49	8RE04-06A	bolt	2	Ø4*6	
48	8141-691101	cutting head base	1	PA6+30GF	
47	8331-691102	fixed sleeve	1		
46	8WF-10B-2001	washer	2		
45	8CC-09B	circlip	1		
44	8201-691101	circlip	4	45	
43	8291-691101	fixture stand	1	Q235A	
42	8SJAM04-08B	screw	2		M4*8
41	8081-691202	soft shaft	1		
40	8SJAM05-08B	screw	1		M5
39	8SACD06-14B	hex screw	2		M6
38	8061-691202	connect flex tube	1		
37	8061-691204	fixed tube(flex)	1	PA1010	
36	8440-691201	connector	1		