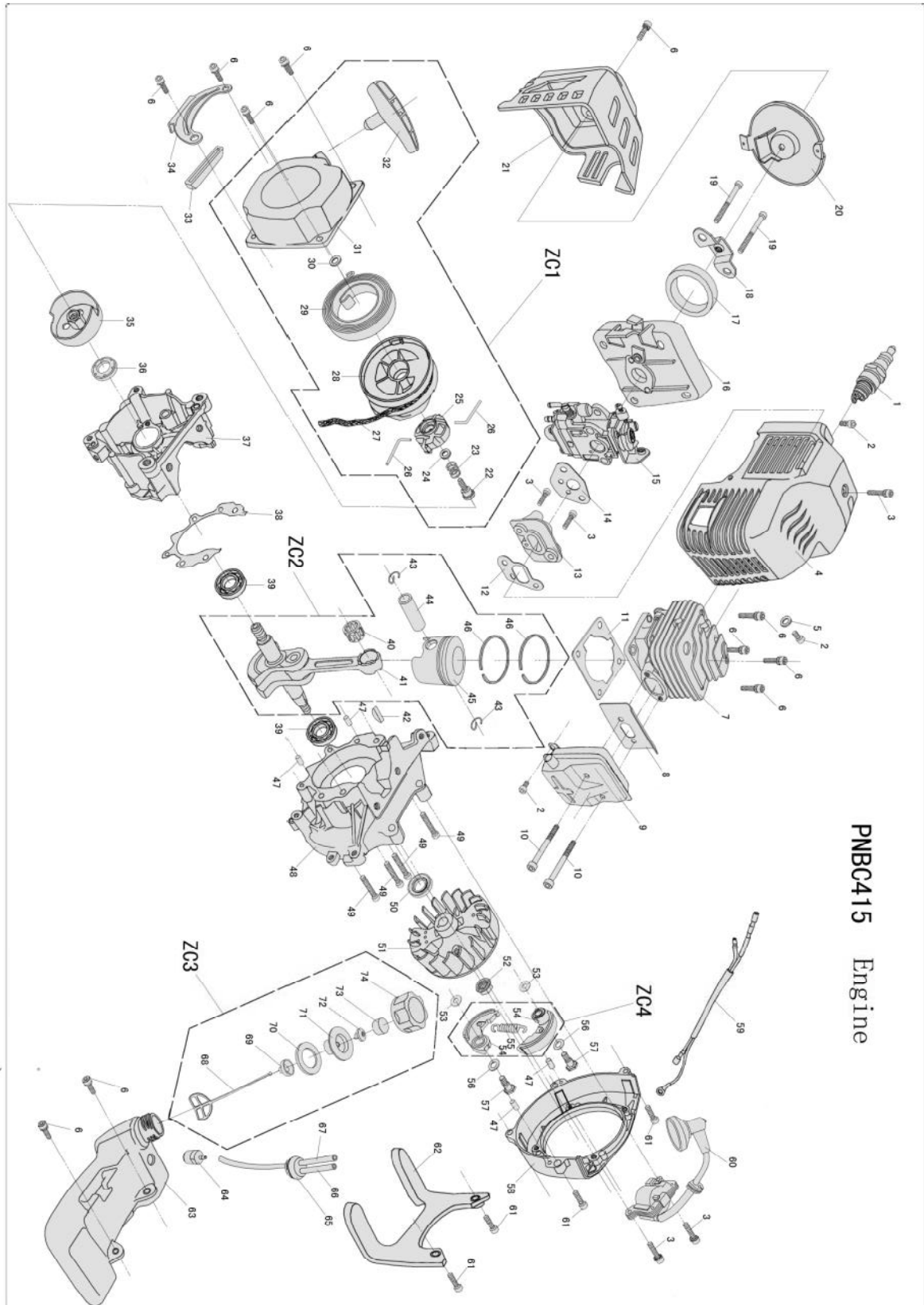


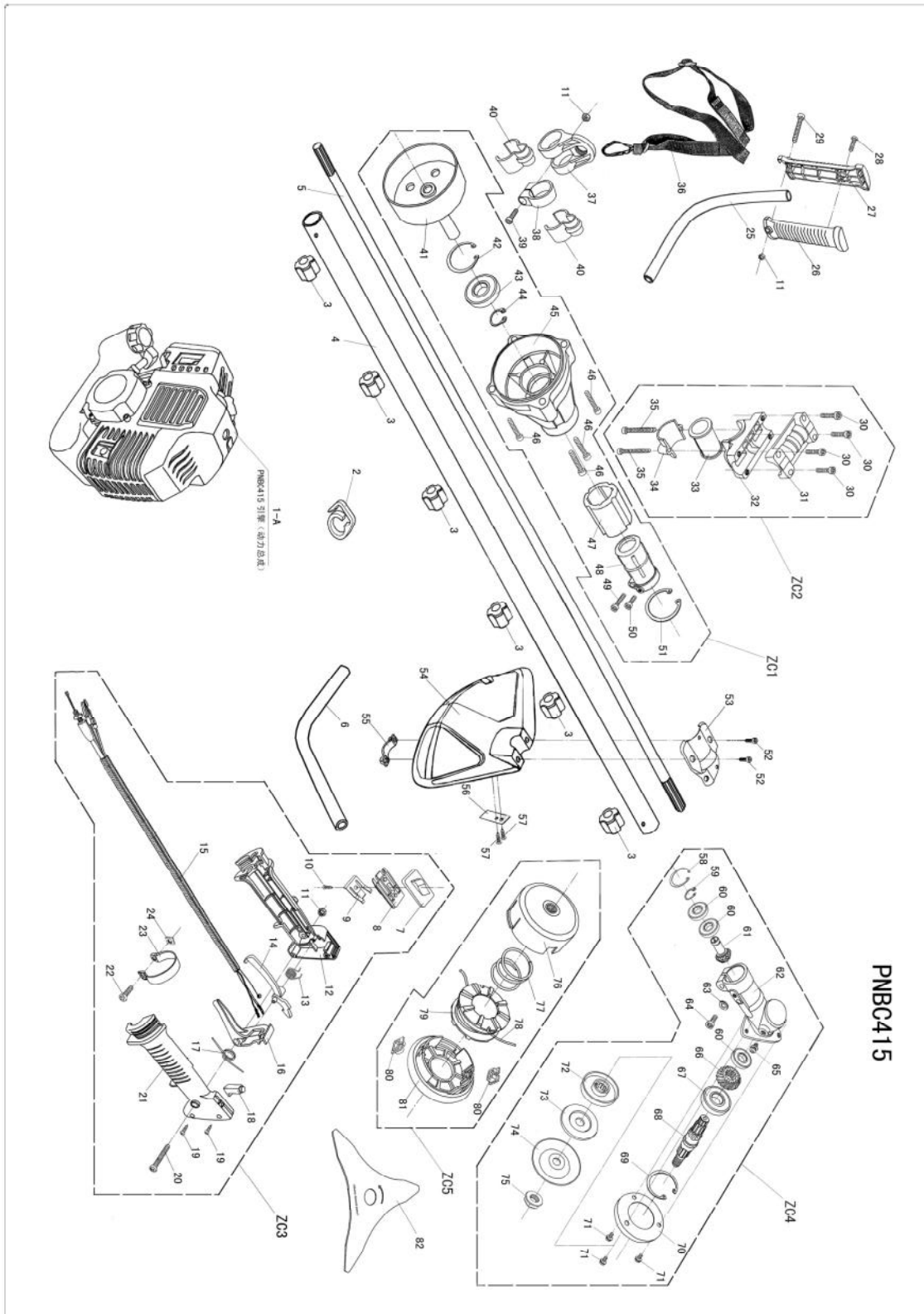


# Best 433



PNBC415 Engine

Pos.	Description	item no.	Units	Pos.	Description	item no.	Units
1	Spark plug	GC415-26200	1	41	bent axle assy	GC415-14110	1
2	screw	GB/T 70. 1	2	42	key	GB/T 1099	1
3	screw	GB/T	5	43	circlip	GC415-14002	2
4	cylinder cover	GC415-11400	1	44	pin	GC415-14001	1
5	washer	GB/T 97.1-2002	1	45	piston	GC415-14211	1
6	screw	GB/T	11	46	piston ring	GC415-14311	2
7	cylinder body	GC415-12111	1	47	pin	GB/T 119.1	4
8	seal	GC415-21001	1	48	crankcase	GC415-13101	1
9	silencer	GC415-21110	1	49	screw	GB/T 70. 1	4
10	screw	GB/T 70. 1	2	50	oil seal	GB/T 9877.1	1
11	seal	GC415-12501	1	51	magneto	GC415-15110	1
12	washer	GC415-16001	1	52	nut	GB/T 6177.1-2000	1
13	inlet air pipe	GC415-16111	1	53	washer	GB/T 97.1-2000	2
14	seal	GC415-18204	1	54	hoof brake block	GC415-22112	1
15	carburetor	GC415-18200	1	55	tension spring	GC415-22113	1
16	air filter	GC415-16211	1	56	washer	GB/T 95-1987	2
17	sponge	GC415-16307	1	57	screw	GC415-22133	2
18	support	GC415-16311	1	58	side cover	GC415-14323	1
19	screw	GB/T 70. 1	2	59	stop switch wire	GC415-26151	1
20	plate	GC415-16308	1	60	FBT	GC415-26110	1
21	air filter cover	GC415-16301	1	61	screw	GB/T 70. 1	4
22	screw	GC415-25288	1	62	bracket	GC415-18303	1
23	spring	GC415-25513	1	63	gasoline tank	GC415-18300	1
24	washer	GC415-25292-1	1	64	filter	GC415-18034	1
25	Startup disk	GC415-25215-1	1	65	fuel tube base	GC415-18104	1
26	driving lever	GC415-25278	2	66	tube	GC415-18101-1	1
27	stay cord	GC415-25301	1	67	tube	GC415-18101-2	1
28	startup disk	GC415-25211-1	1	68	Prevent fall off	GC415-18031	1
29	spring	GC415-25212-1	1	69	Connect body	GC415-17133	1
30	washer	GC415-25292-2	1	70	seal	GC415-18033	1
31	disk cover	GC415-25110-1	1	71	plastic piece	GC415-18208	1
32	handle	GC415-25311	1	72	rubber valve	GC415-17402	1
33	rubber sheath	GC415-18302	1	73	sponge	GC415-18209	1
34	rack	GC415-18303	1	74	fuel cover	GC415-18032	1
35	Machining Piece	GC415-25260-1	1	ZC1	Startup disk	GC415-25000	1
36	oil seal	GB/T 9877.1	1	ZC2	crank connecting rod	GC415-14000	1
37	crankcase	GC415-13201	1	ZC3	fuel cover	GC415-18030	1
38	seal	GC415-13090	1	ZC4	clutch	GC415-22110	1
39	bearing	GB/T 276	2				
40	bearing	JB 2581	1				





# Exploded Diagram BesT 433

Pos.	Description	item no.	Units	Pos.	Description	item no.	Units
1	engine	GC415-42000	1	44	circlip	GB/T894.1-86	1
2	holder wire	GC415-46584	1	45	export house	GC415-48324	1
3	oil bearing	GC415-45300	6	46	screw	GB/T 70.1	4
4	aluminium tube	GC415-45123	1	47	lining	GC415-448323	1
5	transmission shaft	GC415-45130	1	48	tube fixed	GC415-48327	1
6	right hander	GC415-46061	1	49	screw	GB/T 70.1	1
7	slide switch	GC415-47081	1	50	screw	GB/T 70.1	1
8	holder wire	GC415-47082	1	51	internal circlip	GB/T 89301-1986	1
9	spring	GC415-47083	1	52	screw	GB/T 70.1	2
10	tapping screw	GB/T 845-1986	1	53	clip	GC415-48050	1
11	nut	GB/T41-2000	3	54	shield	GC415-48054	1
12	hander left part	GC415-47084	1	55	clip	GC415-48052	1
13	spring	GC415-47086	1	56	knife	GC415-48056	1
14	trigger	GC415-47088	1	57	screw	GB/T 845-1986	2
15	flameout wire	GC415-47090	1	58	circlip	GB/T 89301-1986	1
16	trigger	GC415-47091	1	59	circlip	GB/T894.1-86	1
17	spring	GC415-47092	1	60	bearing	GB/T 276-1994	3
18	press-button	GC415-47093	1	61	gear	GC415-48040	1
19	tapping screw	GB/T 845-1986	2	62	gear box	GC415-48041	1
20	screw	GB/T 818-1986	1	63	washer	GB/T 97.1-2000	1
21	hander right part	GC415-47005	1	64	screw	GB/T 70.1	1
22	screw	GB/T 818-1986	1	65	screw		1
23	lathedog	GC415-47013	1	66	gear	GC415-48042	1
24	nut	GB/T 39-1988	1	67	bearing	GB/T 276-1994	1
25	left hander	GC415-46064	1	68	axle	GC415-48043	1
26	left hander	GC415-46078	1	69	circlip	GB/T 89301-1986	1
27	left hander	GC415-46079	1	70	shield	GC415-48044	1
28	screw	GB/T 818-1986	1	71	screw		3
29	screw	GB/T 818-1987	1	72	pressing plate	GC415-48045	1
30	screw	GB/T 70.1	4	73	pressing plate	GC415-48046	1
31	up clip	GC415-43016	1	74	cover board	GC415-48047	1
32	middle clip	GC415-43017	1	75	nut		1
33	cover	GC415-43013	1	76	cover	GC415-48183	1
34	down clip	GC415-43018	1	77	spring	GC415-48184	1
35	screw	GB/T 70.1	1	78	line	GC415-48185	1
36	braces	GC415-46580	1	79	line plate	GC415-48186	1
37	link together	GC415-46581	1	80	aluminium block	GC415-48188	2
38	link together base	GC415-46582	1	81	base	GC415-48187	1
39	screw	GB/T 70.1	1	82	blade	GC415-48200	1
40	holder wire	GC415-46583	2	ZC1	export assy	GC415-48300	1
41	clutch cover	GC415-22121	1	ZC2	holder assy	GC415-43010	1
42	internal circlip	GB/T 89301-1986	1	ZC3	control handle assy	GC415-47000	1
43	ball bearing	GB/T 276-1994	1	ZC4	gear box	GC415-48040	1
				ZC5	line box	GC415-48180	1