



Exploded Diagram MZ 6365



MZ6365

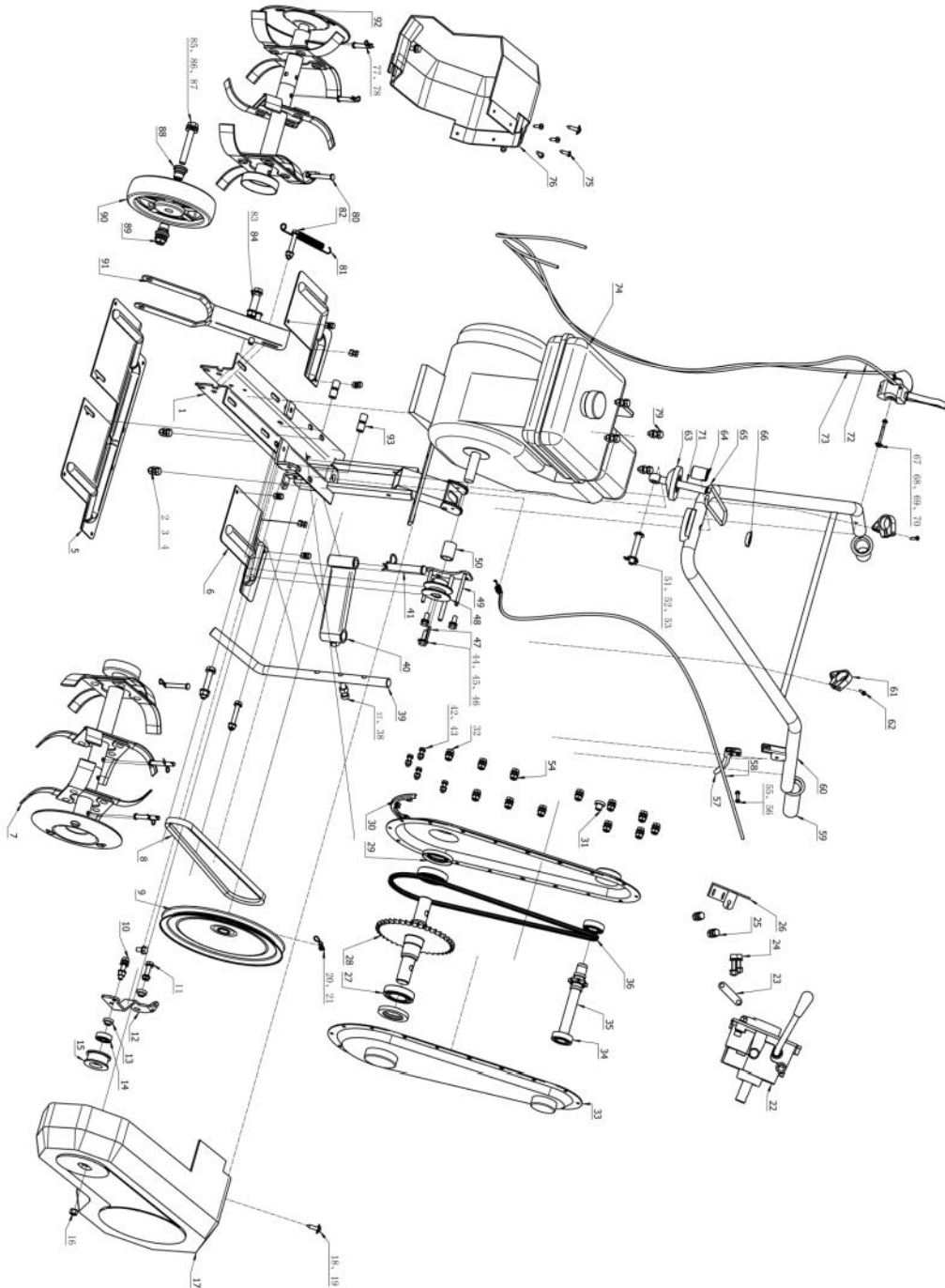
Product Category: Tiller
Product Group: Petrol
Displacement: 196cc

Page: 1 of 3

Versión: 1
Published: 01-01-2010



Exploded Diagram MZ 6365





Exploded Diagram MZ 6365

MZ6365					MZ6365					
SN.	NAME	SPEC	QTY.	CODE	SN.	NAME	SPEC	QTY.	CODE	
1	Body Assy.		1	11760.02.00	47	Flar key A	4 x 4 x 32	1		
2	Screw Bolt	M8 x 16	6		48	Driving Wheel		1	11760.18	
3	Insert Plastic Nut	M8	18		49	Belt cover holder		1	11760.20	
4	Flat washer	8	37		50	Bush		1	11760.19	
5	Middle Mudguard		1	11760.09	51	Pin b	10 x 60	1		
6	Side Mudguard		2	11760.10	52	Pin	3.2 x 20	1		
7	Rotating Tine	Inside	1	11760.04.01	53	Flat washer	10	6		
		Outside	1	11760.04.02	54	Insert plastic nut	6	20		
8	V-belt		1		55	Bolt	M6 x 25	1		
9	Belt Wheel		1	11760.24	56	Spring washer	6	1		
10	Bolt	M8 x *30	1		57	Pinch hand		1		
11	Bolt	M8 x 25	1		58	Tension line		1	11760.31	
12	Tensioner Bracket		1	11760.21.01	59	Handle set		2		
13	Sleeve		2	11760.21.03	60	Handrail components		1	11760.15.00	
14	Bearing	6201RS	1		61	Hanging loop		2	11760.15.04	
15	Tensioner		1	11750.20.01	62	Bolt	ST4.2 x 19	2		
				1	11760.21.02	63	Regulation gear		1	11760.11
16	Washer	8	1		64	Locknut		1	11760.13.01	
17	Belt cover.		1	11760.17.01	65	Bracelet		1	11760.14	
18	Washer	6	2		66	Arc pad		1	11760.13.02	
19	Self-tapping screw	M6x15	2		67	Bolt	M6 x 55	1		
20	Pin	B6*32	1		68	Flat washer	6	2		
21	B-spring		1		69	Large washer	6	1		
22	Gear-box		1	11760.22.00	70	Insert plastic nut	M6	2		
23	Belaying cleat		1	11760.23.02	71	Bolt		1	11760.12	
24	Inner hexagon screw	M8 x 35	2		72	Throttle cable		1	11760.33	
25	Bolt	M8 x 16	2		73	Flameout line		1	11760.32	
26	Ledger plate		1	11760.23.01			163cc	1		
27	Bearing	6007	2				196cc	1		
28	Passive-axls welding pieces		1	11760.07.04.00	74	Engine		1	11760.06.01	
29	Seal ring		2						1	11760.06.02
30	Block mud ring		1	11760.07.05					1	11760.06.03
31	Plug		1							
32	Bolt	M6 x 12	16		75	Bolt	ST5.5 x 19	5		
33	Sprocket shell		2	11760.07.02	76	Shield		1	11760.17.02	
34	Bearing	6004	2		77	Small pin in B	6	6		
35	Active chain Axle		1	11760.07.01	78	Pin B	8 x 40	4		
36	Chain		1		79	Hexagon bolt	M8 x 25	5		
37	Flat nut	M10	1		80	Pin B	10 x 40	2		
38	Screw	M10 x 30	1		81	Tension spring		1		
39	Pole		1	11760.16.05	82	Bolt	M10 x 55	1		
40	End bracket weldment		1	11760.16.01	83	Sleeve		1	11760.05	
41	B,in pin	14 x 85	1		84	Bolt	M8 x 55	2		
42	Bolt	M6 x 16	4		85	Flat washer	12	4		
43	Flat washer	6	40		86	Hexagon bolt	M12 x 80	1		
44	Spring washer	8	5		87	Insert plastic nut	M12	1		
45	Bolt	M8 x 20	2		88	Wheel center set		1	11760.01.03	
46	Large washer	8	1					2	11760.01.02	
					89	Insert plastic nut	M10	1		
					90	Rubber wheel		1		
					91	Fork legs welded components		1	11760.01.00	
					92	Foreign support the market		2	11760.04.09	
					93	Sleeve		4	11760.08	